



C100LGP



☎ 1300 072 926

www.globalmachineriesales.com.au

VIC 24-28 Williams Road Dandenong Sth. 3175
F (03) 9791 7676
E sales@globalmachineriesales.com.au

NSW Unit 1/21 Penny Place Arndell Park 2148
F (02) 8678 2478
E sales@globalmachineriesales.com.au

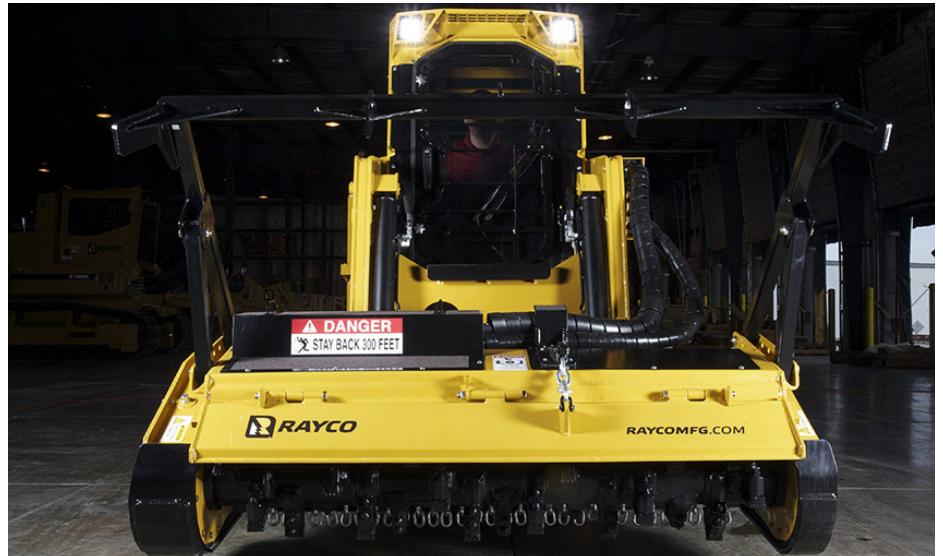


C100LGP

When you go into the bush, you need a machine you can count on. You need a loader-style mulching machine that's purpose built from the ground up to be the most productive and reliable in a mulching application. The C100 is that machine. It's equipped with a 99.2 hp Kubota engine and Rayco's exclusive Super Flow closed loop, hydraulic system, providing 5,500 psi to the Predator mulcher head. To extend service intervals, the C100 features an advanced forestry cooling system which is easy to maintain and will extend service intervals, even when operating in the most extreme conditions. High capacity coolers allow operation in the hottest ambient temperatures. Debris screens filter out most of the contaminants that plug radiators and are easily removed for routine cleaning. The C100LGP model features a higher ground clearance and a heavier undercarriage. The C100LGP's larger chain and wider pads provide extra floatation and traction and a longer service life.

Specifications C100LGP

Weight	6,781kg
Length	468.6cm
Height	261.3cm
Width	202cm
Engine	99hp Kubota
Track Shoe	500mm Single Grouser
Mulcher Head	Predator FM100-6R
Cutting Width	180cm
Rotor Diameter	42.55cm
Rotor Speed	2,200rpm
Mowing Height	299cm
Teeth	36



Features

- Purpose Built Forestry Mower/Mulcher
- 99 hp Kubota Turbo Diesel
- Certified ROPS/FOPS/OPS Cab
- Rayco-Exclusive Forestry Door with 1.25-inch Lexan Rooftop Escape Hatch
- Easily Removable Debris Screens to Protect Coolers
- Heavy-Duty Steel Undercarriage
- Remote Track Tension System with Tension Monitor
- 2-Speed Ground Travel
- Rayco-Exclusive Cooling System
- Super Flow Closed Loop Hydrostatic Cutter Head Drive
- Hydraulic Rear Winch
- Predator Mulcher Head with Variable Displacement Motor

☎ 1300 072 926

www.globalmachinerysales.com.au

VIC 24-28 Williams Road Dandenong Sth. 3175
F (03) 9791 7676
E sales@globalmachinerysales.com.au

NSW Unit 1/21 Penny Place Arndell Park 2148
F (02) 8678 2478
E sales@globalmachinerysales.com.au

