



T360



☎ 1300 072 926

www.globalmachinerysales.com.au

VIC 24-28 Williams Road Dandenong Sth. 3175
F (03) 9791 7676
E sales@globalmachinerysales.com.au

NSW Unit 1/21 Penny Place Arndell Park 2148
F (02) 8678 2478
E sales@globalmachinerysales.com.au

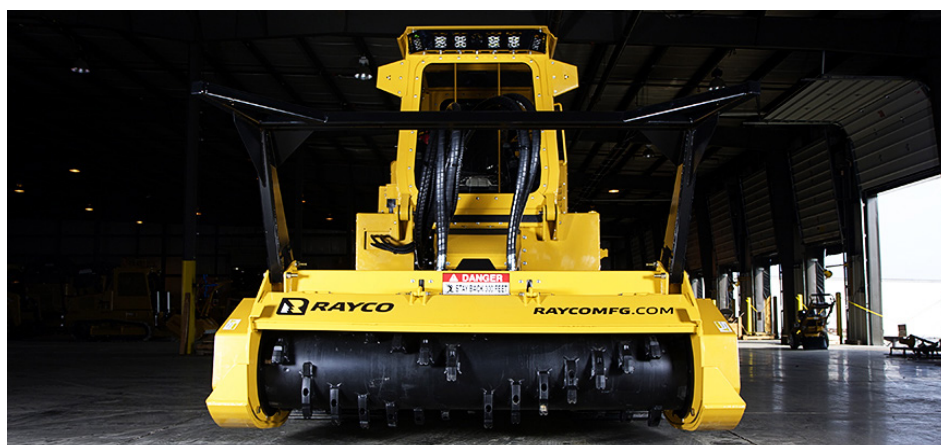


T360

The T360 is a powerful forestry machine that is designed to be equipped with either a stump cutter or forestry mower/mulcher. It's powered by a 360 hp Cummins QSM11 engine that produces peak power of 385 hp and peak torque of 1,350 foot-pounds. A closed loop hydrostatic system powers the cutter head, sending 140 gallon per minute to the attachment's drive motor(s). Rayco's exclusive elevated cooling design keeps engine and hydraulic systems cool in even the harshest of conditions. Debris screens trap airborne chaff before it can plug radiator fins. Reversing fans clear debris screens on-command, extending service intervals. Inside the cab, the operator is kept comfortable in the fully-sealed and climate controlled environment. Onboard diagnostic and monitoring information is provided through a color LCD panel, allowing the operator to track numerous aspects of machine performance and operation. The T360 can be equipped with either a Hydra Stumper stump cutter attachment or a Predator forestry mower/mulcher. The Hydra Stumper head muscled through stumps with its 48" diameter x 3" thick cutter wheel equipped with 56 Monster Tooth cutter tools. For mowing/mulching applications, the Predator mulcher head has a 8-ft cutting width and is powered by a pair of variable displacement drive motors.

Specifications T360

Weight	15,059kg
Length	465cm
Height	322cm
Width	284cm
Engine	360hp Cummins
Track Shoe	700mm Double Grouser
Mulcher Head	Predator FM360-8
Cutting Width	232cm
Rotor Diameter	68.5cm
Rotor Speed	1700rpm
Mowing Height	188cm
Teeth	56



Features

- Purpose built forestry mower/mulcher
- 99 hp Kubota turbo diesel engine
- Super flow, closed loop hydrostatic cutter head drive
- Rayco-exclusive elevated cooling design
- 17.7-inch rubber tracks
- 2-speed travel
- Easily removable debris screens to protect coolers
- Hydraulic rear winch
- Rayco-exclusive forestry door with 1.25-inch lexan
- Escape hatches in rooftop and rear window
- Predator mulcher head with variable displacement hydraulic motor

☎ 1300 072 926

www.globalmachinerysales.com.au

VIC 24-28 Williams Road Dandenong Sth. 3175
F (03) 9791 7676
E sales@globalmachinerysales.com.au

NSW Unit 1/21 Penny Place Arndell Park 2148
F (02) 8678 2478
E sales@globalmachinerysales.com.au

