

BOXER[®] 950HD

BY MORBARK[®]

Model Specifications

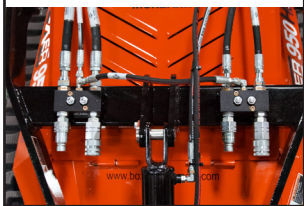
Engine System	US	Metric
Type	Isuzu	
Emission Level	Tier 4 Final	
HP/kW	48 HP	36 kW
Fuel Type	Diesel	Diesel
Fuel Capacity	15 Gallons	57 Litres
Hydraulic Capacity	12.2 Gallons	46.2 Litres
System Flow (Total)	25.6 GPM	97 L/min
Hydraulic Flow Aux (Hi/Lo)	15/3.5 GPM	57/13 L/min
Hydraulic Flow (Drive)	7.1 GPM	27 L/min
System Pressure	3000 PSI	20684 kPa
Engine Warranty	3 years/3,600 hours; 5-year major component coverage	
Product Warranty	1 year/1,000 hours	

Units	US	Metric
Track Gauge	35.5 in	902 mm
Track Width	9 in	230 mm
Weight (no attachment)	3470 lbs	1572 kg
Length (w/Bucket)	120 in	3048 mm
Length (w/out Bucket)	97.1 in	2466 mm
Width (Overall)	44 in	1118 mm
Height (Overall)	53.6 in	1361 mm
Height (Fully Raised)	101.5 in	2578 mm
Operating Capacity (35%)	957 lbs	434 kg
Tip Capacity	2734 lbs	1238 kg
Hinge Pin Height (Fully Raised)	95.5 in	2426 mm
Dump Height	77.25 in	1962 mm
Dump Angle	34 Degrees	34 Degrees
Reach	34 in	864 mm
Ground Clearance	5.75 in	146 mm
Ground Pressure	4.3 PSI	29.6 kPa
Ground Speed	4.5 MPH	7.2 km/h

Model Features

Class-leading 95.5" (2.4-meter) Hinge Pin Height And 77.25" (2-meter) Dump Height

Dual Remote Auxiliaries with 2-Button Pressure Relief Block



Dual Hydrostatic Hydraulic System

High Track Ground Drive

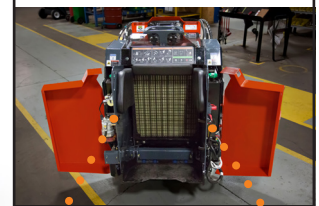
Universal Attachment Plate

Class-leading 48-HP (36kW) Diesel Engine

Class-leading Dual Pattern Electronic Joystick Controls

Operator Hip and Thigh Padding

Dual Rear Access Panels



Remote Mounted Filters

Engine Electronics

Spring-cushioned Operator Platform

Updated 2/14/17