



MORBARK

► **M15R** ◀◀◀



HEAVY-DUTY INDUSTRIAL WOOD CHIPPERS FROM THE INDUSTRY LEADER



📞 **1300 072 926** | globalmachinerysales.com.au

VIC 24-28 Williams Road Dandenong Sth. 3175
E sales@globalmachinerysales.com.au
F (03) 9791 7676

NSW Unit 1/21 Penny Place Arndell Park 2148
E sales@globalmachinerysales.com.au
F (02) 8678 2478

MORBARK® BEEVER™ M15R



BENEFITS

- Ideal for residential tree services, utility line clearing, vegetation management, maintenance contractors and municipalities, this high capacity, high-production chipper includes more standard features than any other chipper in its class.
- The powerful TorqMax™ dual feed wheel compression system generates more than 9,822 kg./mtr. of material pulling force.
- Unit is pre-plumbed and outfitted for the easy installation of most aftermarket components.
- Ergonomic infeed design provides consistent feed control bar activation.
- Like all Morbark equipment, the M15R is a long-lasting, durable machine backed by a world-class parts and service support team.



Drum

30" (76.2cm) diameter four-knife staggered knife-pocket drum with patented removable knife holders and Vortex chambered air-impeller system provides maximum chipping efficiency.



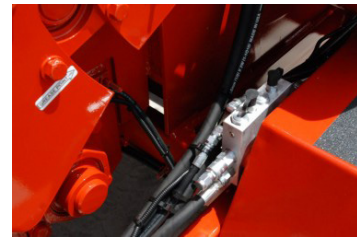
Channel Frame

The 6" (15.24cm) channel frame rails with 2" (5.08cm) x 6" (15.24cm) tubular steel frame with cross bracing increases structural strength while maintaining low unit weight.



Reversing Auto-Feed

The reversing auto-feed system automatically stops forward feed and briefly backs material away from the drum for optimum engine performance while chipping.



Hydraulic Down Pressure

The Variable Force™ Hydraulic Down Pressure System eliminates the use of springs and creates up to 4,500 lbs. (2,041.17 kgs) of perpetual down pressure.

SPECIFICATIONS

SPECIFICATIONS MAY VARY WITH EQUIPMENT OPTIONS

General

Chipping capacity 18" (45.72cm)
 Engine Cummins Diesel
 Horsepower 170 HP
 Height 271.8 cm
 Width 221 cm
 Length 551.2 cm
 Weight (approximate) 4,037 kgs
 Suspension Heavy Duty Leafspring
 Infeed opening 56" wide x 37" high
 Throat opening 20.5" wide x 18" high
 Drum 23.75" wide x 30" diameter
 Fuel capacity 121.13 litres
 Hydraulic capacity 45.4 litres
 Frame 3.72 kgs, 15.24 cm channel
 Brakes Electric with Breakaway
 Tyres (2) 215/75R17 1/2"
 Hitch 63.5 mm Pintle Ring

Equipment Highlights

Dual horizontal feed wheels with TorqMax top feed wheel compression system, hydraulic lift assist, Variable Force constant hydraulic down pressure system with additional manually applied hydraulic down pressure at the valve handle and direct drive bottom feed wheel with torque arm coupler.

Live hydraulic system including: ball valve, pump, motor, and valve bank with additional pre-plumbed valve section for installation of an aftermarket winch package.

7.62cm x 12.7cm tubular steel telescoping drawbar with two 30.48cm extensions.

Morthane Paint System: A chemically cured, electrostatically applied urethane coating with high-gloss finish, built-in UV protection, chip and chemical resistance and corrosion protection.

Options Include

ChipSafe® Operator Safety Shield
 Winch package: heavy-duty, 2,268 kgs pull capacity with rope and 305cm chafe guard
 Hydraulic Swivel Discharge
 Cone Holder
 Spare Tyre/Mount
 Folding Infeed Tray
 Flow Control
 Axle Options Available
 Fender Options Available
 Battery Box Options Available



MORBARK



1300 072 926 | globalmachinerysales.com.au