

BG LIFT

THE BEST TOOLS FOR YOUR WORK

COMPACT CRANE / MINI CRANE / PICK AND CARRY



► M 250 ◀◀◀

SIMPLE ANSWERS TO COMPLEX LIFTING



☎ 1300 072 926 | globalmachinerysales.com.au

VIC 24-28 Williams Road Dandenong Sth. 3175
E sales@globalmachinerysales.com.au

NSW 49-50 Cassola Place, Penrith, NSW 2750
E sales@globalmachinerysales.com.au

QLD 191 Manesium Dr, Crestmead QLD 4132
E sales@globalmachinerysales.com.au



M 250 (MEDIUM COMPACT CRANE)

M 250, the attention given to the study of shapes and the exclusive line design.














The aesthetic and functional harmony in a great technological project. A solid crane, equipped with advanced technologies, top quality materials and components, to obtain the best overall performance. Built for indoor and outdoor use in limited spaces and hardly accessible buildings. The dimensions and lightweight, combined to millimetric precision manoeuvrability, allow quick and less invasive operations.

SPECIFICATIONS

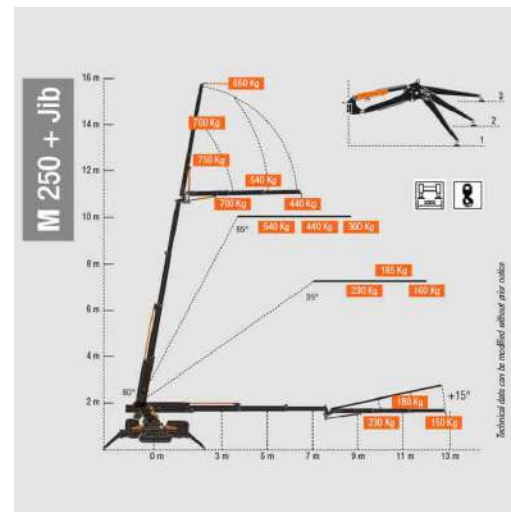
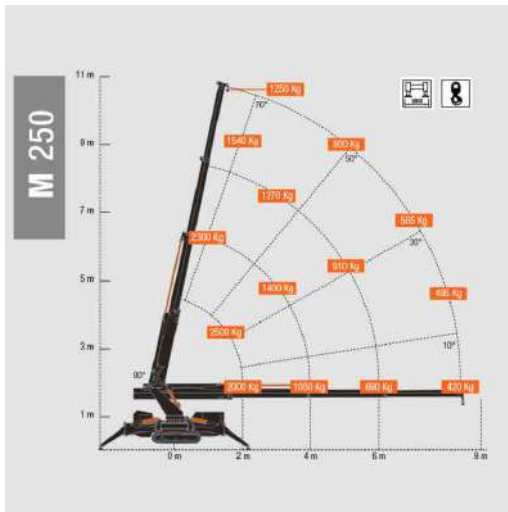
- **Dimensions (h × w × l)**
1,76 × 0,78 × 3,24 m
- **Weight**
2420 kg
- **Lifting capacity**
2500 kg
- **Max outreach with hydraulic Jib (optional)**
12,85 m
- **Maximum lifting height(from the ground)**
16,00 m
- **Maximum lifting height (underground)**
-62,5 m



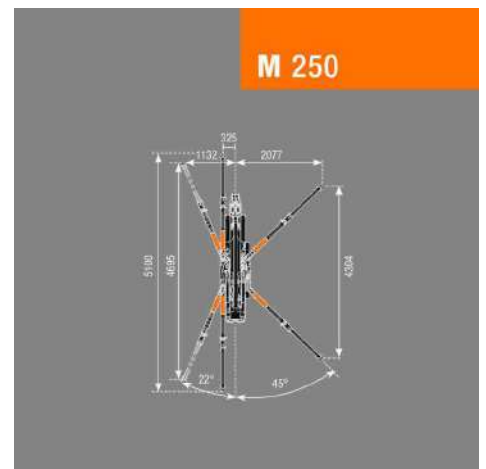
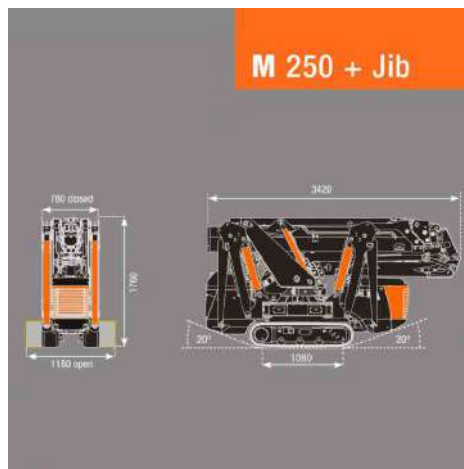
TECHNICAL SPECIFICATIONS M 250

	Max capacity	2500 Kg / 1,5 m
	Max outreach	8,43 m
	Max outreach with hydraulic Jib (optional)	12,85 m
	Max hook height	10,40 m
	Max hook height with hydraulic Jib	16,00 m
	Slewing angle-speed	Continuous / 1,5 rpm
	Winch(optional)	First layer pull 900 Kg Rope lenght 65 m Speed in direct pull 47 m / min.
	Radio remote control	Scanreco Can-Bus + Display
	Stability control	Electronic
	Stability system	24 different position - Max 4155x4300
	Weights	Standard crane: 2420 Kg Jib: 210 kg Electric engine: 40 kg Winch: 65 kg
	Crawler Crane Traction	Trasmission: Moto-reducer Scope: 50 l Pressure: 170 Bar Speed: 0 - 2 K/h Max slope degree: 25° Max pressure on the ground: 0,47 Kg/Cm ²
	Diesel Engine	Brand: Yanmar Model: 3TNV70 Max power: 16.3 kw - 22.2 Hp Max torque: 48 Nm Tank capacity: 13 l

LOADING TABLES



DIMENSIONS



TECHNOLOGIES INSTALLED

Electric Engine Always Allowed

2,2Kw Mono phase electric engine, 230V Inverter controlled.

Electronic control system

The integrated control system give to the crane the capabilities of automatically upgrading the load limiting device to the situation determined by the position of each outriggers; permitting the operator to completely work in safety conditions.

No Limits

Easy to operate, around and over obstacles, thanks to the "ballast free" boom.

Jib Over Line

+15° Jib to overtake beyond obstacles.

Jib Ready to Use

Always "Ready to operate" folded hydraulic jib under the main boom.

STANDARD EQUIPMENT

Radio remote control with display for crawler, chassis and crane function.

Continuous rotation

Predisposition for winch Installation

Predisposition for Jib Installation

Outrigger with different stability position

Automatic stabilization

Two Speed Crawler Translation

extendable Crawler

N° 2 working LED lamps on the crawler

Engine manual Rpm increment

N° 4 Lifting Connections

Electronic Limiting Device

Auto diagnostic

Crane Color Black RAL 9005

Cylinders color orange

According To EN13000

BG Connect.



OPTIONAL EQUIPMENT

- 900 Kg hydraulic winch
- Lowered hook connections
- Third line pull pulleys
- Working LED lights on the boom and Jib
- Hydraulic Jib with opening up to 195°
- Mono phase electric engine 2,2 Kw/230 V with inverter
- Automatic engine rpm increment
- No marking rubber pads
- Two man capacity baskets CE
- Plates for outriggers
- Green oil
- Automatic closing.

PHOTO GALLERY

