



S13F

F full hydraulic series

VIC 24-28 Williams Road Dandenong Sth. 3175
E sales@globalmachinerysales.com.au

NSW Unit 49-50 Cassola Pl, Penrith NSW 2750
E sales@globalmachinerysales.com.au

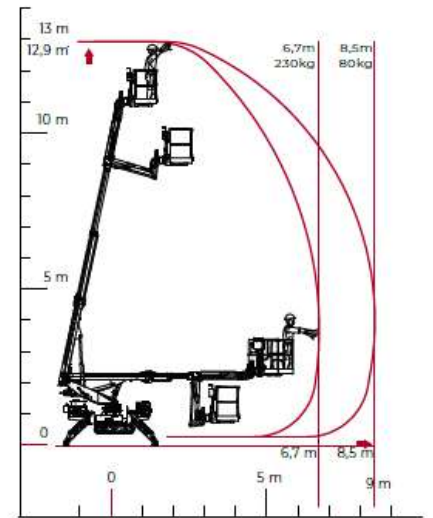
QLD 191 Magnesium Dr, Crestmead QLD 4132
E sales@globalmachinerysales.com.au

globalmachinerysales.com.au



1300 072 926





F full hydraulic series

TECHNICAL SHEET PERFORMANCE AND DIMENSIONS

Main features

Lightweight and multifunctional, equipped with a two-stage telescopic boom and jib (90°), the S13F is the smallest platform in the entire CMC range and the most compact in its category, but it is second to none when it comes to work in difficult conditions and limited spaces.

Max. working height 12,9 m

Max. reach with 80 kg 8,5 m

Platform height 10,9 m

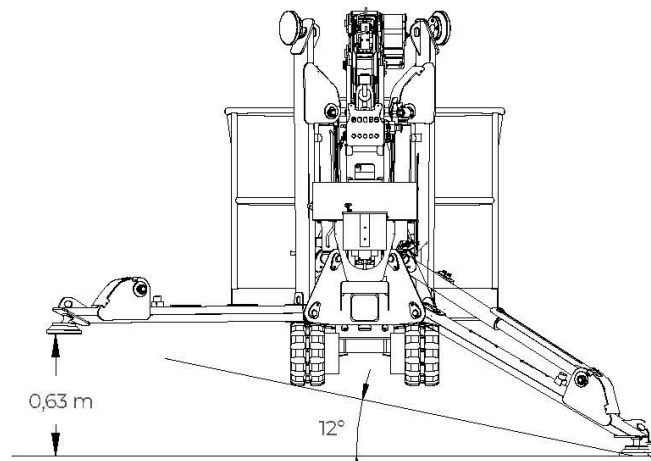
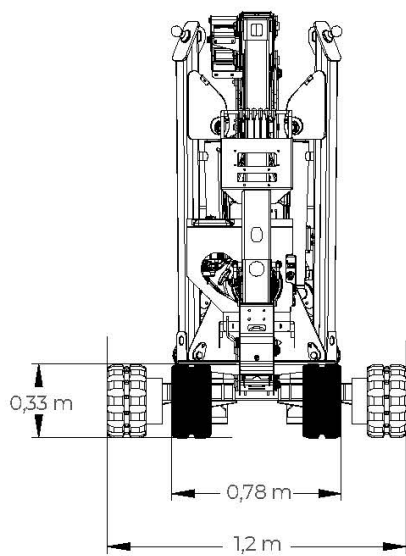
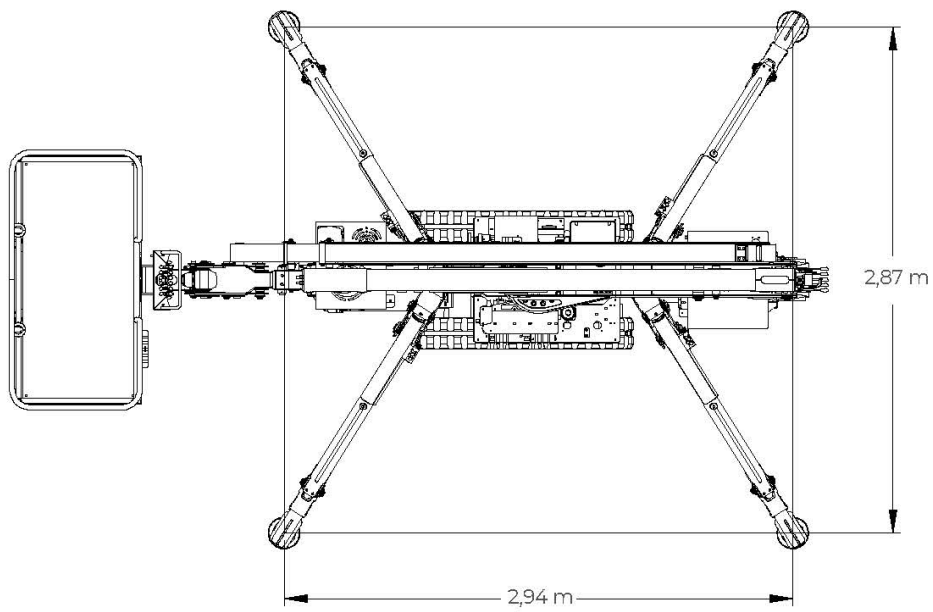
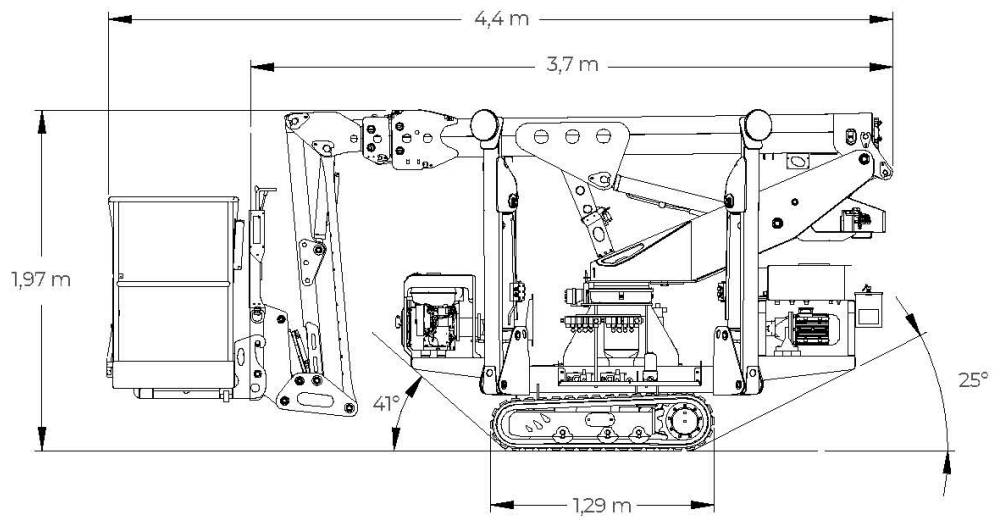
Max. load in basket 230 kg

Basket dimensions 1,4 x 0,7 x 1,1 m

Basket rotation +/-90° (options)

Turret rotation +/- 178° (356° non-continuous)

Total weight 1565 Kg



22-05-TS-EN-01