



S41

XL Extra Large
Series

VIC 24-28 Williams Road Dandenong Sth. 3175
E sales@globalmachinerysales.com.au

NSW Unit 49-50 Cassola Pl, Penrith NSW 2750
E sales@globalmachinerysales.com.au

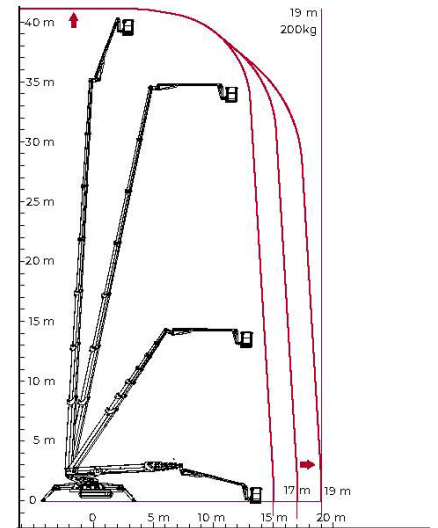
QLD 191 Magnesium Dr, Crestmead QLD 4132
E sales@globalmachinerysales.com.au

globalmachinerysales.com.au



1300 072 926





XL Extra Large Series

TECHNICAL SHEET PERFORMANCE AND DIMENSIONS

Main features

No one is in its league. With its telescopic boom with 6 extensions, plus the articulated telescopic jib, the CMC S41 is capable of reaching the extraordinary working height of 41m above the ground and the lateral outreach up to 19m with a unique payload of 200kg.

Max. working height 41 m

Max. outreach with 200 kg 19 m

Platform height 39 m

Max. load in basket 200 kg

Basket dimensions 2 x 0,8 x 1,1 m

Basket rotation +90°

Turret rotation +/- 180° (360° continuous)

Total weight 13460 Kg

