



**MORBARK**<sup>®</sup>  
BUILDING EQUIPMENT THAT CREATES OPPORTUNITIES

▶ **2230 FORESTRY** ◀◀



HEAVY-DUTY INDUSTRIAL WOOD CHIPPERS FROM THE INDUSTRY LEADER

📞 **1300 072 926** | [globalmachinerysales.com.au](http://globalmachinerysales.com.au)



**VIC** 24-28 Williams Road Dandenong Sth. 3175  
**E** [sales@globalmachinerysales.com.au](mailto:sales@globalmachinerysales.com.au)

**NSW** Unit 49-50 Cassola Pl Penrith SW 2750  
**E** [sales@globalmachinerysales.com.au](mailto:sales@globalmachinerysales.com.au)

**QLD** 191 Magnesium Dr, Crestmead QLD  
**E** [sales@globalmachinerysales.com.au](mailto:sales@globalmachinerysales.com.au)

# MORBARK BEEVER™ 2230 FORESTRY



## BENEFITS

- Our versatile, high-performance 2230 model built heavier in critical wear areas provides optimal performance for in-woods chipping.
- The M20R Forestry's greater horsepower means faster chipping and more efficient loading than the standard 2230.
- Easily filling a 53' trailer and sustaining four to five loads per day, this hard-working, aggressive chipper is the perfect option for those looking to enter the biomass market with low startup costs.
- Tough, abrasion-resistant AR-400 steel is used for the drum skin, replaceable belly band, discharge chute and wear strips underneath the bed chain, providing strength and long wear life.
- Like all Morbark equipment, the 2230 is a long-lasting, durable machine backed by a world-class parts and service support team.



### Infeed Deck

A 6' feed bed with live chain drive, tilted downward at 4° angle, provides efficient feeding of tree length material.



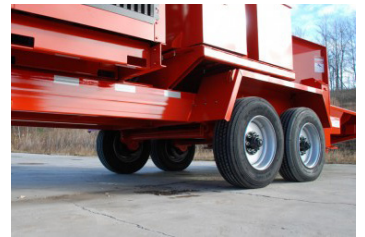
### Remote Control

Wireless remote with tethered back-up system controls the feed functions, yoke functions, throttle functions, rear stabilizers and hydraulic swivel discharge.



### Drum

The Advantage 3™ drum creates more uniform chips and reduces operating and maintenance costs.



### Chassis

The Beever M20R Forestry has the heaviest frame among machines in the <20,000 lb. (9,072 kg.) weight range.

## SPECIFICATIONS

SPECIFICATIONS MAY VARY WITH EQUIPMENT OPTIONS

### General

Chipping capacity .....	20" (50.8 cm)
Height .....	335.3 cm
Width .....	233.7 cm
Length .....	774.7 cm
Weight (approximate) .....	7,665.7 kgs
Suspension .....	9,072 kgs torsion
Infeed opening ....	165.1 cm wide x 109.2 cm high
Throat opening .....	71.1 cm wide x 50.8 cm high
Drum .....	84.8 cm wide x 91.4 cm diameter
Engine .....	CAT Diesel
Horsepower .....	325–400 HP
Fuel capacity .....	246 litres
Hydraulic capacity .....	163 litres
Frame .....	5 cm x 25.4 cm tubular
Tyres .....	(4) 235/75x17 1/2"
Hitch .....	76.2 mm Pintle

### Equipment Highlights

TorqMax Plus compression system, hydraulic lift assist, Variable Force constant hydraulic down pressure system with additional manually applied hydraulic down pressure at the valve handle and sprocket driven bottom feed wheel.

Directional flow discharge system with 38° horizontal and 17° vertical hydraulic positioning manufactured from 3/8" thick abrasion resistant.

(AR-400) top and sides with 1/4" HR bottom.

Hydraulic front and dual rear stabilizers.

36" diameter x 33 3/8" wide drum with front pocket and six Babbitt-style knives with removable knife holders.

Discharge clean out door on bottom.

Steel guard enclosing valve bank and automatic feed system components.

3-speed feed rate.

### Additional Features

Live hydraulic system including: ball valve, pump, motor, and valve bank.

Morthane Paint System: A chemically cured, electrostatically applied urethane coating with high-gloss finish, built-in UV protection, chip and chemical resistance and corrosion protection.

Spanish and English safety decals.

### Options Include

Track undercarriage options.

Mor-Lift Model 150M Knuckleboom Loader with 14' extended boom reach and 2,680-lb. lift capacity at 10' reach.

Direction Flow Discharge w/90° horizontal swing. Axle options available.

Fender options available.

Battery box options available.

Custom paint and logo packages.



**MORBARK**  
BUILDING EQUIPMENT THAT CREATES OPPORTUNITIES



1300 072 926 | [globalmachinerysales.com.au](http://globalmachinerysales.com.au)