



MORBARK

► Beever 812 ◀◀◀



HEAVY-DUTY INDUSTRIAL WOOD CHIPPERS FROM THE INDUSTRY LEADER

📞 **1300 072 926** | globalmachinerysales.com.au



VIC 24-28 Williams Road Dandenong Sth. 3175
E sales@globalmachinerysales.com.au

NSW Unit 49-50 Cassola Pl Penrith SW 2750
E sales@globalmachinerysales.com.au

QLD 191 Magnesium Dr, Crestmead QLD
E sales@globalmachinerysales.com.au

MORBARK BEEVER 812



BENEFITS

- Perfect for rental companies, landscapers, golf courses and pruning crews, this high-capacity unit is easy to transport and operate.
- The only chipper in its class to combine both a wide infeed chute opening and 1 1/4" thick chipping disc, the 812 has a 114kg disc and shaft weight provides more inertia to power through material and continuously feed material.
- With a single top feed wheel compression system and 32.3 ci hydraulic motor with spring-assisted down pressure, the 812 generates more than 2,300 lb/ft of material pulling force and 454kg of combined down pressure to easily feed a variety of materials.
- Like all Morbark equipment, the 812 is a long-lasting, durable machine backed by a world-class parts and service support team.



Belt Drive

Direct drive with belt power transfer eliminates clutch components and over centre belt tensioning systems, reducing problem areas and easing maintenance burdens.



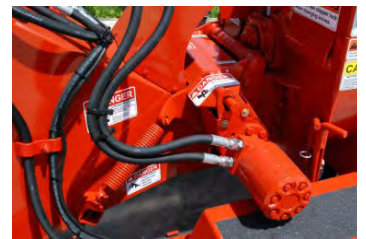
Infeed Chute

Infeed chute with 96-square-inch throat opening allows for easy material feeding and reduced trim labor and folds to reduce transport and storage length.



360° Manual Chute

Full 360° manual chute with swivel discharge and adjustable height puts chips right where needed without removing the Beaver from the tow vehicle.



Feed System

A top feed wheel compression system with spring-assisted down pressure easily breaks down a variety of materials.

SPECIFICATIONS

SPECIFICATIONS MAY VARY WITH EQUIPMENT OPTIONS

General

Chipping capacity 8" (20.3 cm)
 Engine Kubota Diesel / Vanguard Petrol
 Horsepower 44 HP / 37 HP
 Height 223.5 cm
 Width 160 cm
 Length (transport) 365.8 cm
 Length (operating) 421.6 cm
 Weight (approximate) 1,134 kgs
 Suspension leaf spring
 Infeed opening 33 1/2" wide x 24 1/2" high
 Throat opening 12" wide x 8" high
 Feed wheel 11 1/2" wide x 9" diameter
 Disc dimensions 1 1/4" thick x 28" diameter
 Fuel capacity 37.9 litres
 Hydraulic capacity 37.9 litres
 Frame 2" x 4" Tubular
 Tyres (2) 185/75R14 – 8-ply
 Hitch 50mm Ball

Equipment Highlights

Direct drive with belt power transfer.
 Automatic feed system.
 Chipper disc with two 10 1/2" x 4" x 3/8" dual-edged chipper knives and four full-length, bolt-on, chip-throwing paddles.
 Reversible feed works control bar and dual safety cables located within infeed chute.
 Pinned chipper hood access with integrated hood safety device to disconnect the start system when the chipper hood is opened and allow ease of disc maintenance.
 3" x 4" tubular steel fixed-length drawbar and 3/8" thick safety chains with clasp hooks.
 Morthane Paint System: A chemically cured, electrostatically applied urethane coating with high-gloss finish, built-in UV protection, chip and chemical resistance and corrosion protection.

Additional Features

Fuel tank sight gauge, drain plug and shut-off valve
 Hydraulic tank shut-off valve, drain plug, clean-out cover and vented filter head assembly with dipstick to check oil level
 8D, 1400 CCA Battery
Options Include
 ChipSafe® Operator Safety Shield
 Variable speed flow control
 2,500 lb. Torflex suspension axle with electric brake system, electric brake actuator and 185R14 tires with rims
 Custom paint and logo packages
 Knife saver tool
 Engine stop on infeed
 Material pushing tool
 Spanish and English safety decals



MORBARK



1300 072 926 | globalmachinerysales.com.au