



**S28**

**DP** Double  
Performance Series

**VIC** 24-28 Williams Road Dandenong Sth. 3175  
**E** [sales@globalmachinerysales.com.au](mailto:sales@globalmachinerysales.com.au)

**NSW** Unit 49-50 Cassola Pl, Penrith NSW 2750  
**E** [sales@globalmachinerysales.com.au](mailto:sales@globalmachinerysales.com.au)

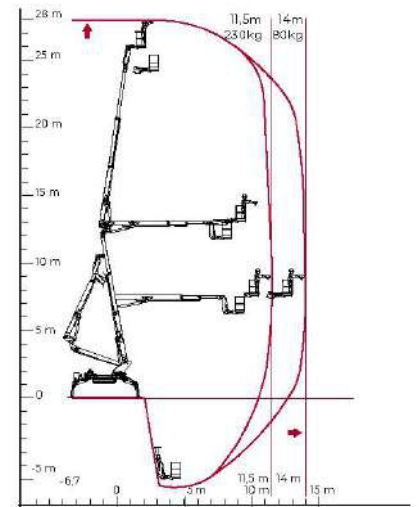
**QLD** 191 Magnesium Dr, Crestmead QLD 4132  
**E** [sales@globalmachinerysales.com.au](mailto:sales@globalmachinerysales.com.au)

[globalmachinerysales.com.au](http://globalmachinerysales.com.au)



1300 072 926





## DP Double Performance Series

### TECHNICAL SHEET

PERFORMANCE AND DIMENSIONS

#### Main features

A bundle of power and technology capable of performing in any application. It has four stabilisation areas, two working areas and climbing outriggers for working on all types of terrain and reaching even the most difficult spots with its maximum working height of 28m, lateral outreach of 14m and the ability to work in negative down to -6.7m.

Max. working height 27,9 m

Possibility of working in negative -6,7 m

Max. outreach with 80 kg 14 m

Platform height 25,9 m

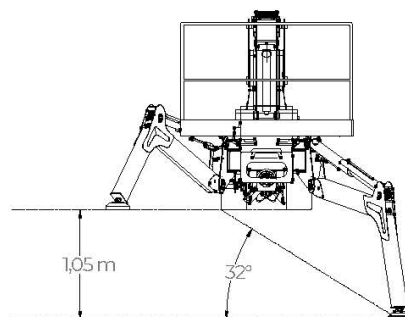
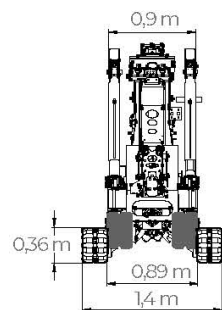
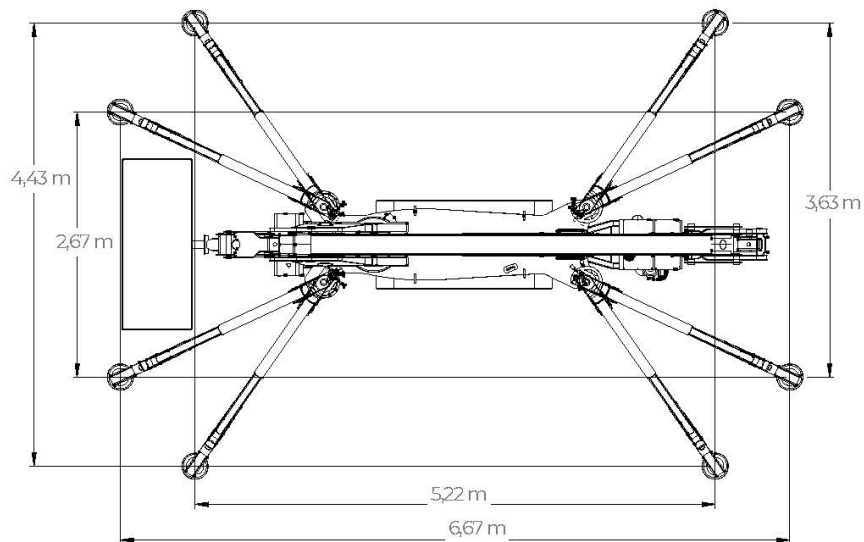
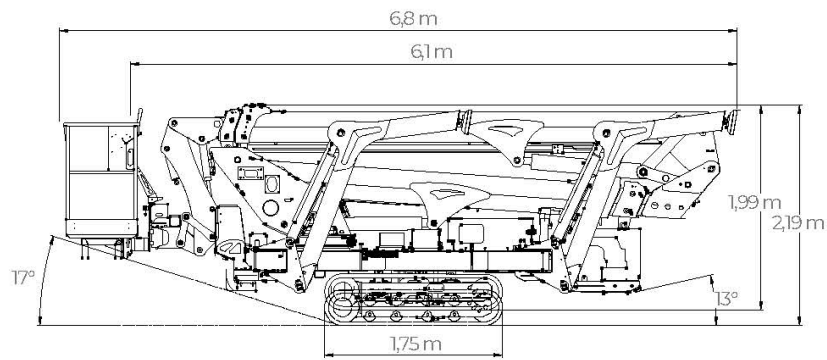
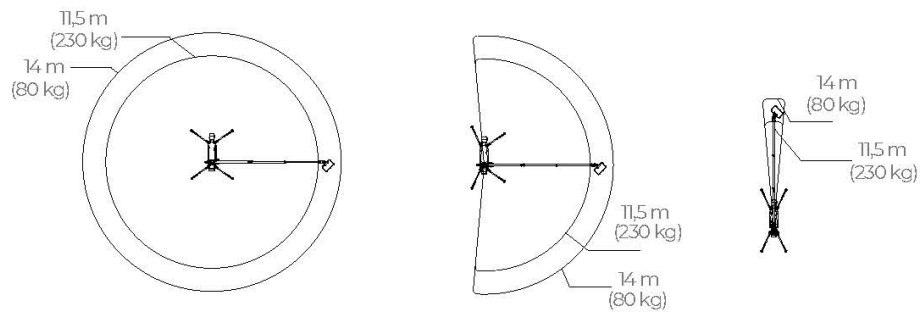
Max. load in basket 230 kg

Basket dimensions 1,7 x 0,7 x 1,1 m

Basket rotation +/-90°

Turret rotation +/- 200°(400° continuous)

Total weight 4160 Kg



22-05-TS-EN-01